



# Product Specifications

Dual-mode Control Card

**HD-B6**

V1.0 20200514

## 1. System Overview

HD-B6, it is an LED control system for remote control and offline HD video playback for small-pitch LED advertising screens. Including asynchronous sending box HD-B6, receiving card R50X and control software HDPlayer three parts.

HD-B6 supports multi-card HDMI connected for splicing, which can realize multi-card adaptive splicing, single-card independent control and other modes, a product tailored for advertising machines and mirror screens.

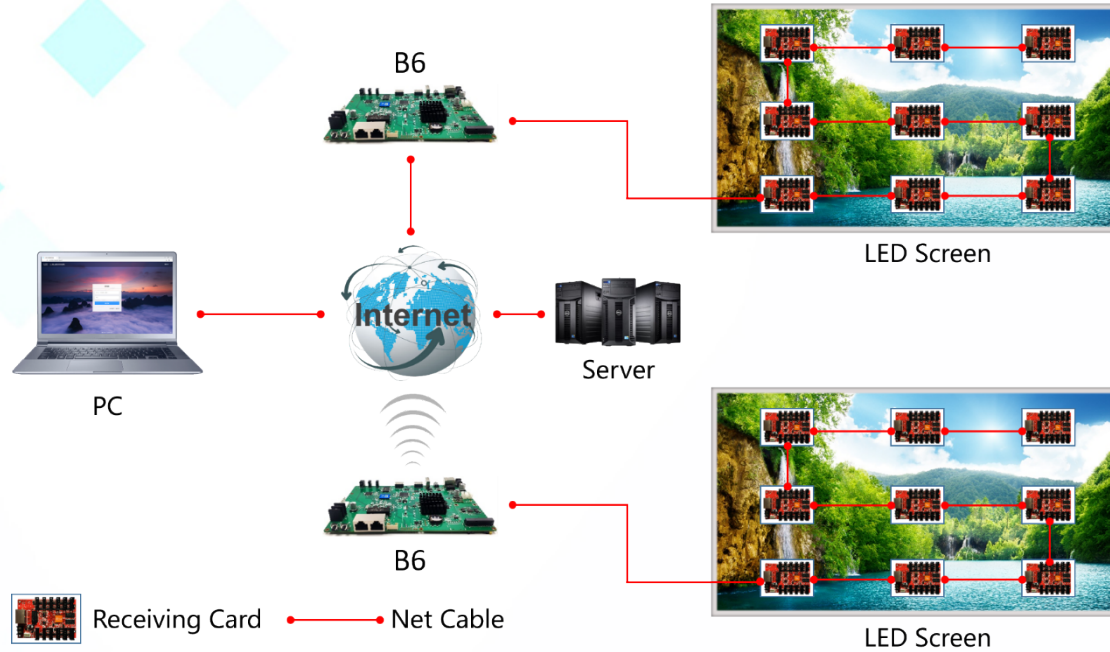
The user completes the parameter setting and program editing and transmission of the display through HDPlayer

## 2. Controlling System Configuration

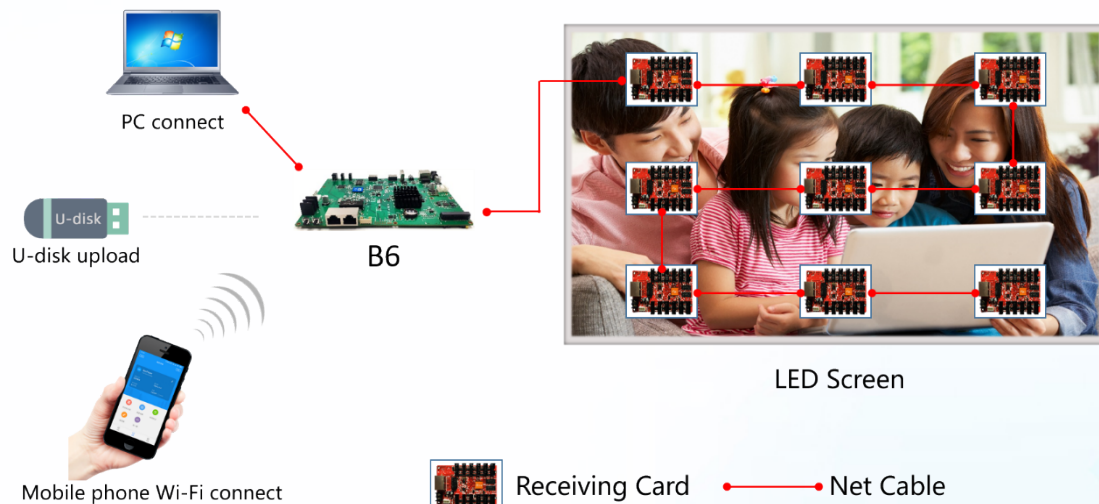
Product	Type	Functions
<b>Dual-mode LED display player</b>	HD-B6	Asynchronous core parts It has 8GB memory.
<b>Receiving card</b>	R Series	Connected the screen, Showing programs in the screen
<b>Control Software</b>	HDPlayer	Screen parameter settings, editing the program, send program, etc.
<b>Accessories</b>		Network cables, HDMI Cable. etc.

## 3. Control Mode

Internet unified management: The play box can be connected to the Internet through 4G (optional), network cable connection, or Wi-Fi Bridge.

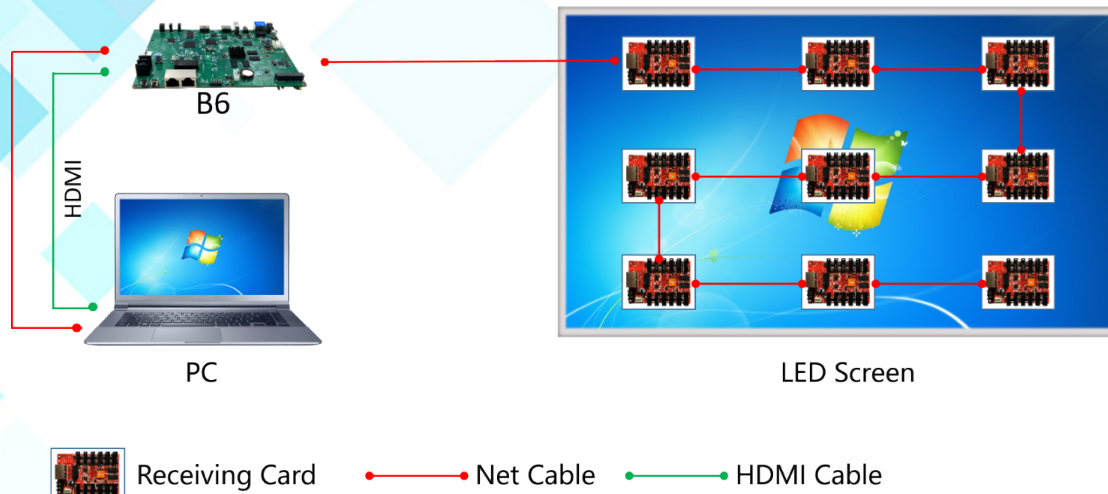


2. Asynchronous one-to-one control: Update programs by network cable connections, Wi-Fi connections or USB flash drives. LAN (cluster) control can access the LAN network through by network cable connection or Wi-Fi Bridge.



3. Real-time picture synchronization display: The play box is connected to the sync source through the HDMI high-definition video line, and the sync picture is automatically scaled without any setting.





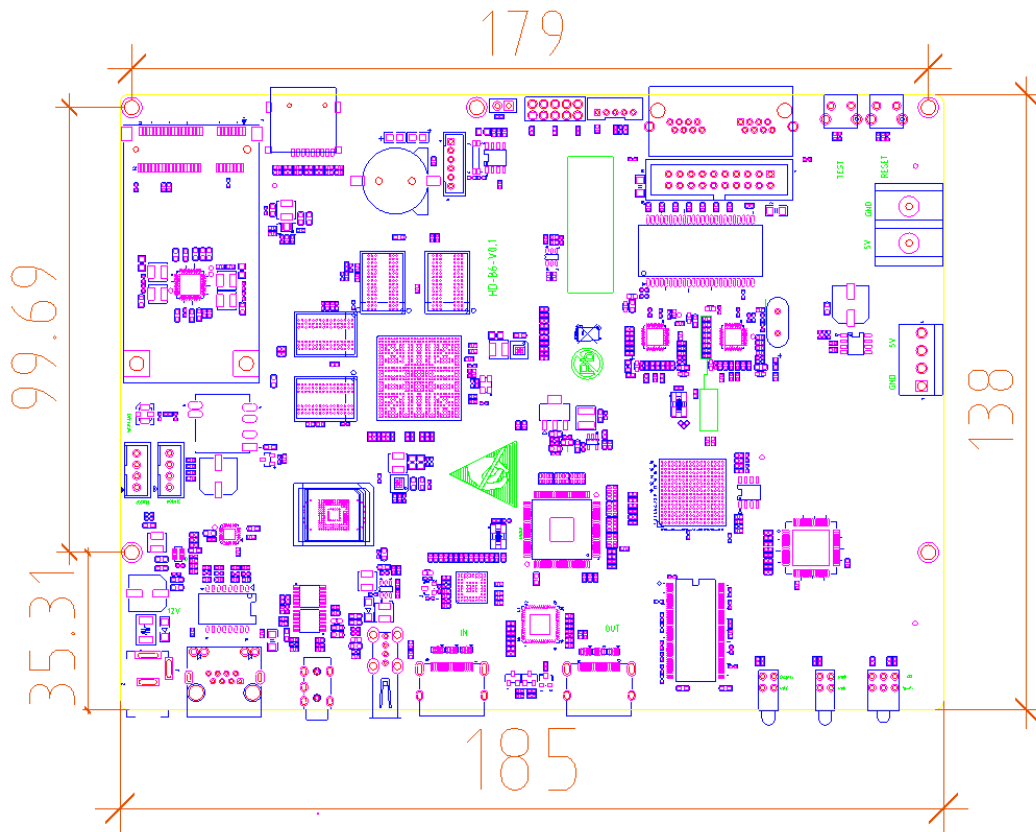
## 4. Product Features

- Control rang: 1.30 million pixels, Support HDMI multiple card splicing up to 2.3 million (1920\*1200)pixel;
- Support Asynchronous & Synchronous display.
- Support HDMI automatic zooming function;
- HDMI LOOP, Support multiple B6 stitching;
- One B6 control card support widest 3840 pixel, highest 2048 pixel.
- 8GB memory, support expending memory by U-disk,
- Support HD video decoding, 60Hz frame rate output
- No need set IP address, it could be identified by controller ID automatically
- Unified management of more LED display through Internet or LAN.
- Equipped with Wi-Fi, Mobile APP management.
- Equipped 3.5mm standard audio interface output.

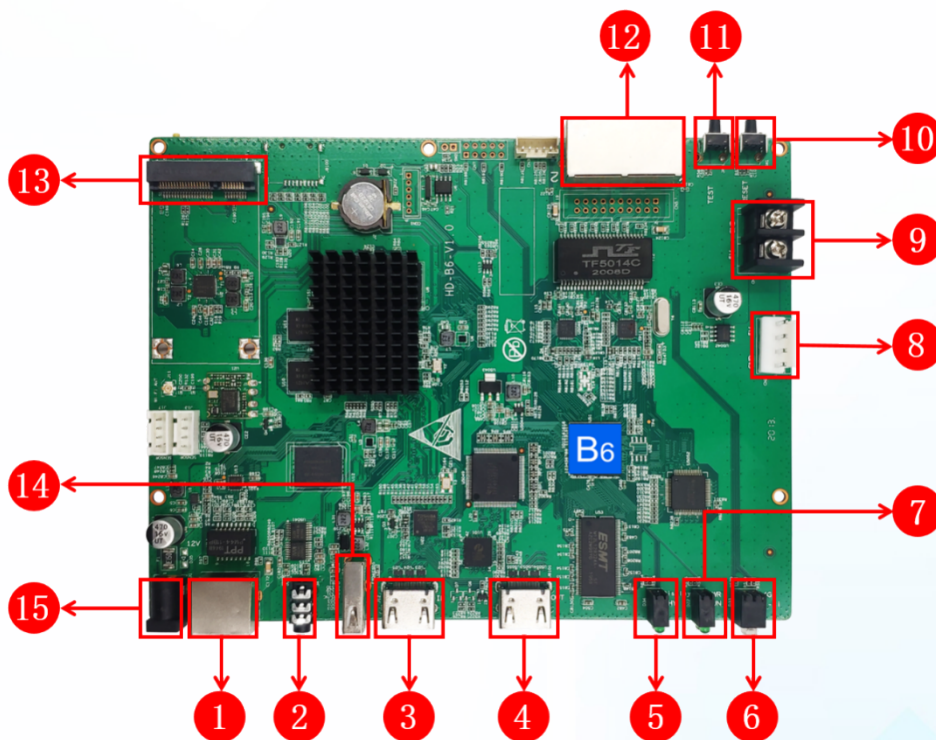
## 5. System Function List

<b>Module Type</b>	Compatible with indoor and outdoor full color and single color module Support conventional chip and mainstream PWM chip
<b>Scan Mode</b>	Static to 1/64 scan mode
<b>Control Range</b>	One B6 control range: 1.3 million pixel, widest 3840, highest 2048; HDMI multiple B6 splicing control range: 2.3 million pixel, widest 3840, highest 4096.
<b>Gray Scale</b>	256-65536 (adjustable)
<b>Basic Functions</b>	Video, Pictures, Gif, Text, Office, Clocks, Timing, etc. Remote, Temperature, Humidity, Brightness, PM Value, etc. Support Synchronized picture auto-zooming, Playing live screen without video processor.
<b>Video Format</b>	HD video hard decoding, 60Hz frame rate output. AVI, WMV, RMVB, MP4, 3GP, ASF, MPG, FLV, F4V, MKV, MOV, DAT, VOB, TRP, TS, WEBM, etc.
<b>Image Format</b>	Support BMP, GIF, JPG, JPEG, PNG, PBM, PGM, PPM, XPM, XBM, etc.
<b>Text</b>	Text editing, Image, Word, Txt, Rtf, Html, etc.
<b>Document</b>	DOC, DOCX, XLSX, XLS, PPT, PPTX, etc. Office2007 Document format
<b>Time</b>	Classic Analog Clock, digital clock and various of clock with image background
<b>Audio output</b>	Double track stereo audio output
<b>Memory</b>	8GB Flash Memory, Expanding memory by U-disk
<b>Communication</b>	100M/1000M RJ45 Ethernet, Wi-Fi, 3G/4G, LAN, USB
<b>Working Temp</b>	-40°C-80°C
<b>Port</b>	IN: 12V Power Adapter*1, 1Gbps RJ45*1, USB 2.0*1, Test Button*1, GPS, 4G(Optional), Sensor port*1, HDMI*1 OUT: 1Gbps RJ45*1, AUDIO*1, HDMI*1
<b>Power</b>	18W

## 6. Dimension Chart



## 7. Appearance Description



1. Input network port, connected to the computer network port.

2. Audio output port: standard two-channel stereo output
3. HDMI Input port: Video Signal Input, Connecting Computer, Set Top Box, etc, when splicing, it is connected to the HDMI output port of the previous B6.
4. HDMI output port: can be connected to the LCD display, When splicing, it is connected to the HDMI input port of the next B6.
5. Screen Display light: showing the programs status of the display,
6. 4G and Wi-Fi light: For showing 4G/ Wi-Fi working status.
7. Power and running light: The (PWR) light is always on when the power is turned on, and (RUN) light is flashing.
8. 5V Power interface: Connect 5V DC power supply power to the control card;
9. 5V Power interface: Connect 5V DC power supply power to the control card
10. Reset button: Used to restore default parameter values.
11. Test button: for test module.
12. Output Network Port: Connect to Receiving Card
13. PCIE Port: For insert 4G module;
14. USB port: Connecting USB devices, such as: U disk, mobile hard disk, etc.
15. Power port, connect to 12V DC.

## 8. Basic Parameters

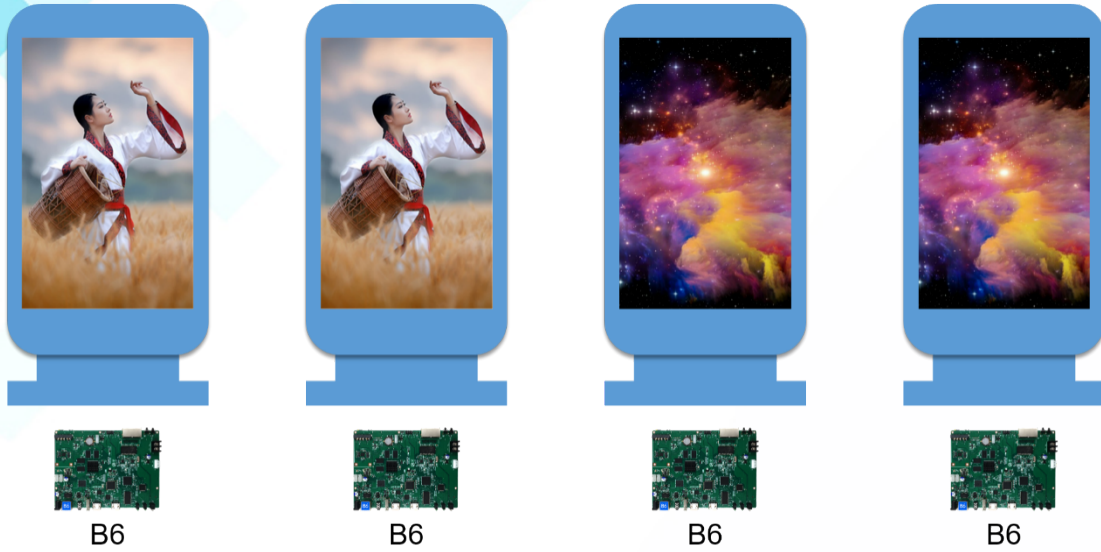
	Minimum	Typical	Maximum
<b>Rated voltage(V)</b>	11.2	12	12.5
<b>Storage temperature(°C)</b>	-40	25	105
<b>Work environment temperature(°C)</b>	-40	25	80
<b>Work environment humidity (%)</b>	0.0	30	95
<b>Net weight (kg)</b>			
<b>Certificate</b>	CE, FCC, RoHS		

## 9. Advertising Screen Application



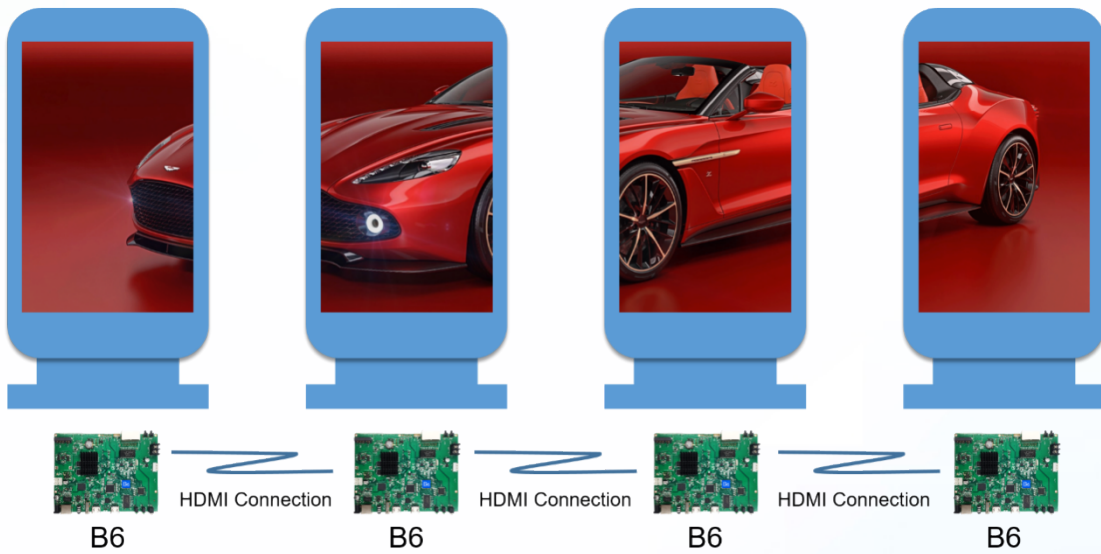
### 1. Play independently

Each display screen is independent and plays independently without interfering with each other.



### 2. Multi-screen splicing to play one program

With HDMI high-definition cable connected to put the contents of multiple display screens into a whole picture.



## 10. Product appearance



